

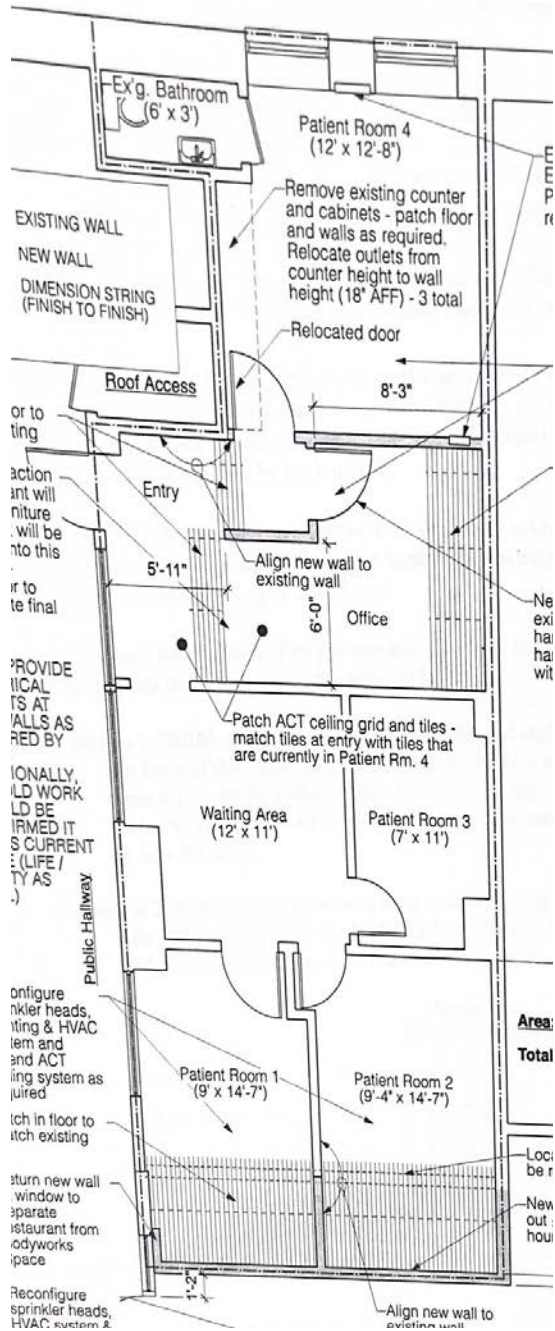
SECOND FLOOR OFFICE SPACE FOR LEASE

1709 MASS AVE. - LEXINGTON, MASSACHUSETTS

960 SF



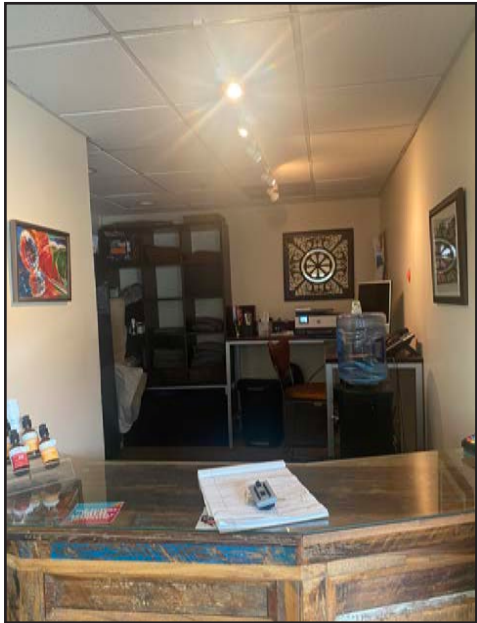
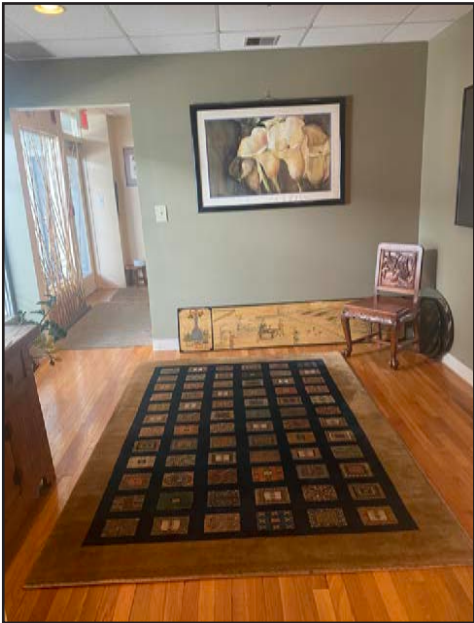
FLOOR PLAN / PROPERTY DETAILS



 <p style="text-align: center;">960 SF Second Floor Space in an Elevated Building</p>	 <p style="text-align: center;">Available Now</p>
<ul style="list-style-type: none"> • Second Floor Space in an Elevated Building • 2 Underground Parking Spaces • Located in busy downtown Lexington with restaurants and cafes • Area Retailers, Restaurants and Cafes Include: Il Casale Restaurant, Bertucci's, Love at First Bite, Peets Coffee & Tea and CVS 	



INTERIOR PHOTOS



AERIAL



OFFICE SPACE FOR LEASE • 1719 MASSACHUSETTS AVENUE • LEXINGTON, MA 

Find Your Place.

LYNNE COHEN-FRIEDMAN
LYNNE@CONVISERPG.COM
MOBILE: (617) 513-2037

ADAM CONVISER
ADAM@CONVISERPG.COM
MOBILE: (617) 593-1700



CONVISER PROPERTY GROUP, INC
220 RESERVOIR STREET, SUITE 9 • NEEDHAM, MA 02494
O: (781) 320-0600 • F: (781) 791-4599 • WWW.CONVISERPG.COM

OFFICE SPACE FOR LEASE • 1709 MASSACHUSETTS AVENUE • LEXINGTON, MA



Ver: 1.11.24