

FOR LEASE
- opportunity in -
NEWTON CENTRE, MASSACHUSETTS
1231 CENTRE STREET
1,300 SF PLUS FULL BASEMENT



CONVISER PROPERTY GROUP, INC
858 WASHINGTON STREET, SUITE 306 • DEDHAM, MA 02026
O: (781) 320-0600 • F: (781) 791-4599 • WWW.CONVISERPG.COM



- Nearby retailers include Panera Bread, CVS Pharmacy, Mr. Sid, Sumi Seo, Starbucks, Little Big Diner and more
- Lots of foot traffic
- Municipal parking lot in back and across from the property
- Restaurant equipment for sale

SQ. FOOTAGE



1,300 SF Plus Full Basement

BASE RENT



Upon Request

NNN



Upon Request

AVAILABLE



Immediate

PARKING



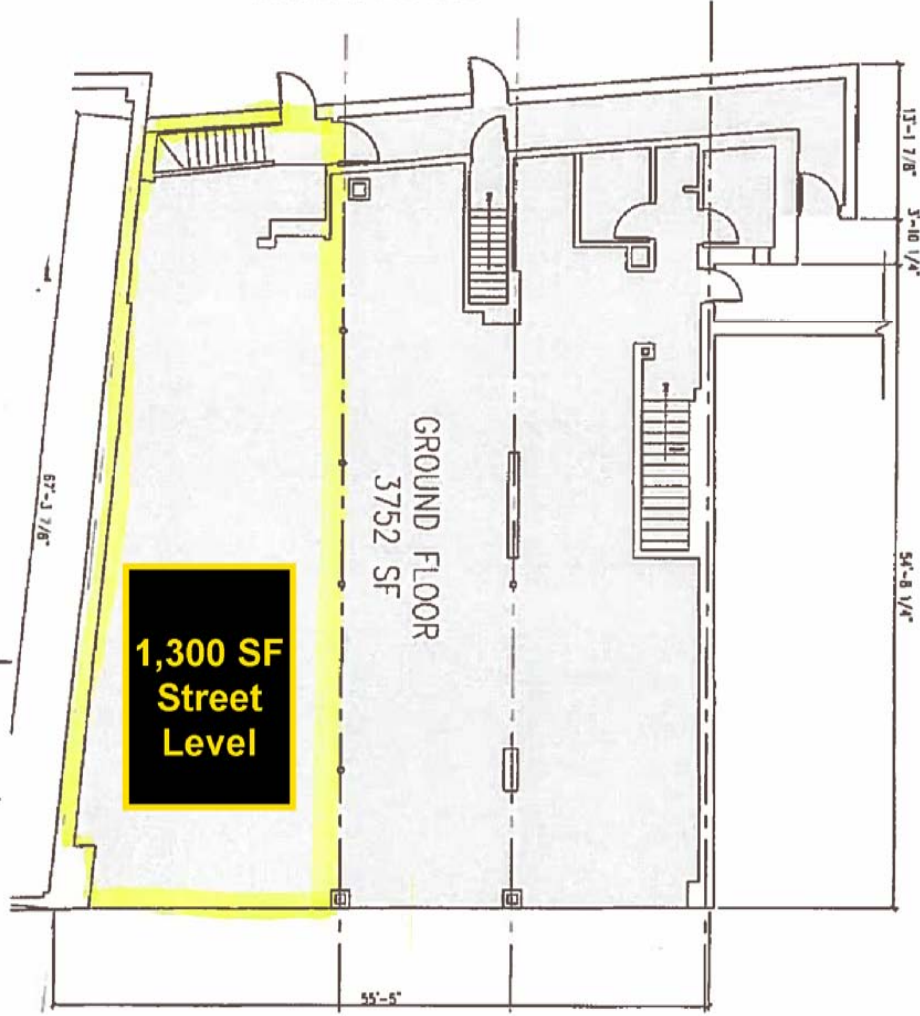
Municipal Lots

FOR LEASE
- opportunity in -
NEWTON CENTRE, MASSACHUSETTS
1231 CENTRE STREET
1,300 SF PLUS FULL BASEMENT



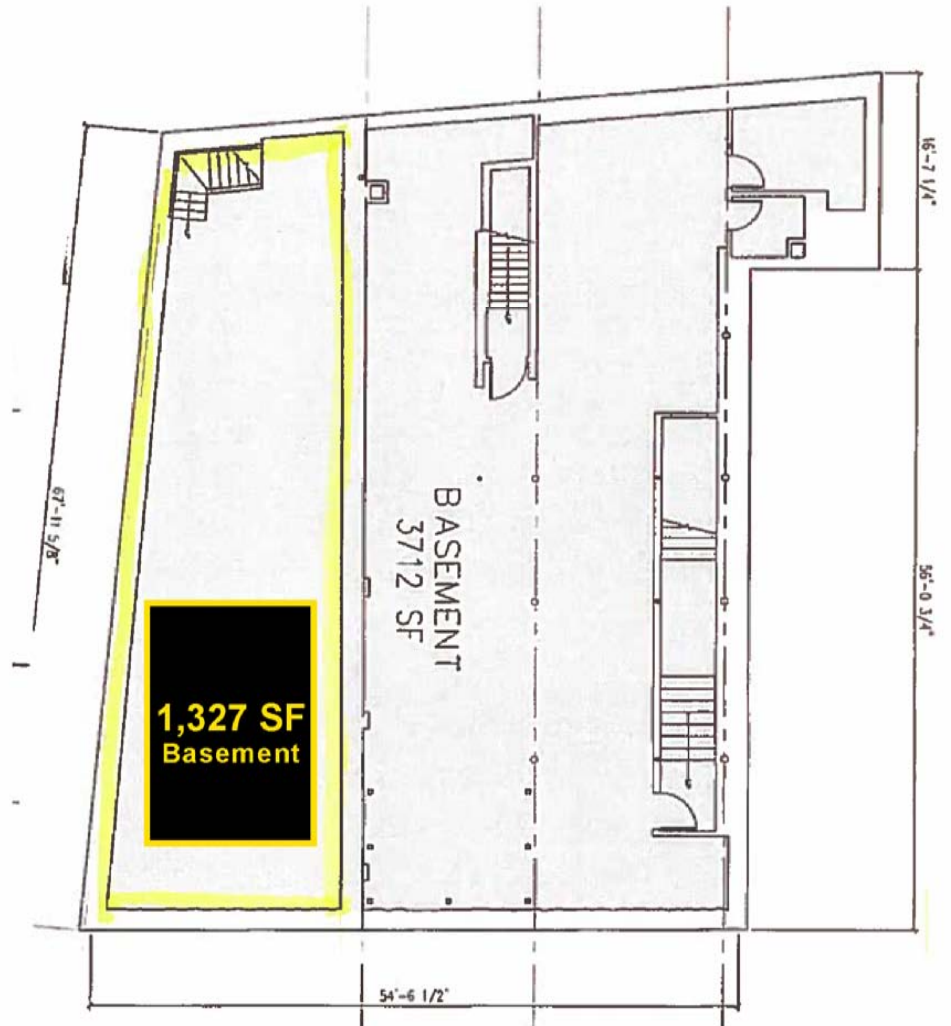
CONVISER PROPERTY GROUP, INC
858 WASHINGTON STREET, SUITE 306 • DEDHAM, MA 02026
O: (781) 320-0600 • F: (781) 791-4599 • WWW.CONVISERPG.COM

STREET LEVEL



Centre Street

BASEMENT



FOR LEASE

- opportunity in -

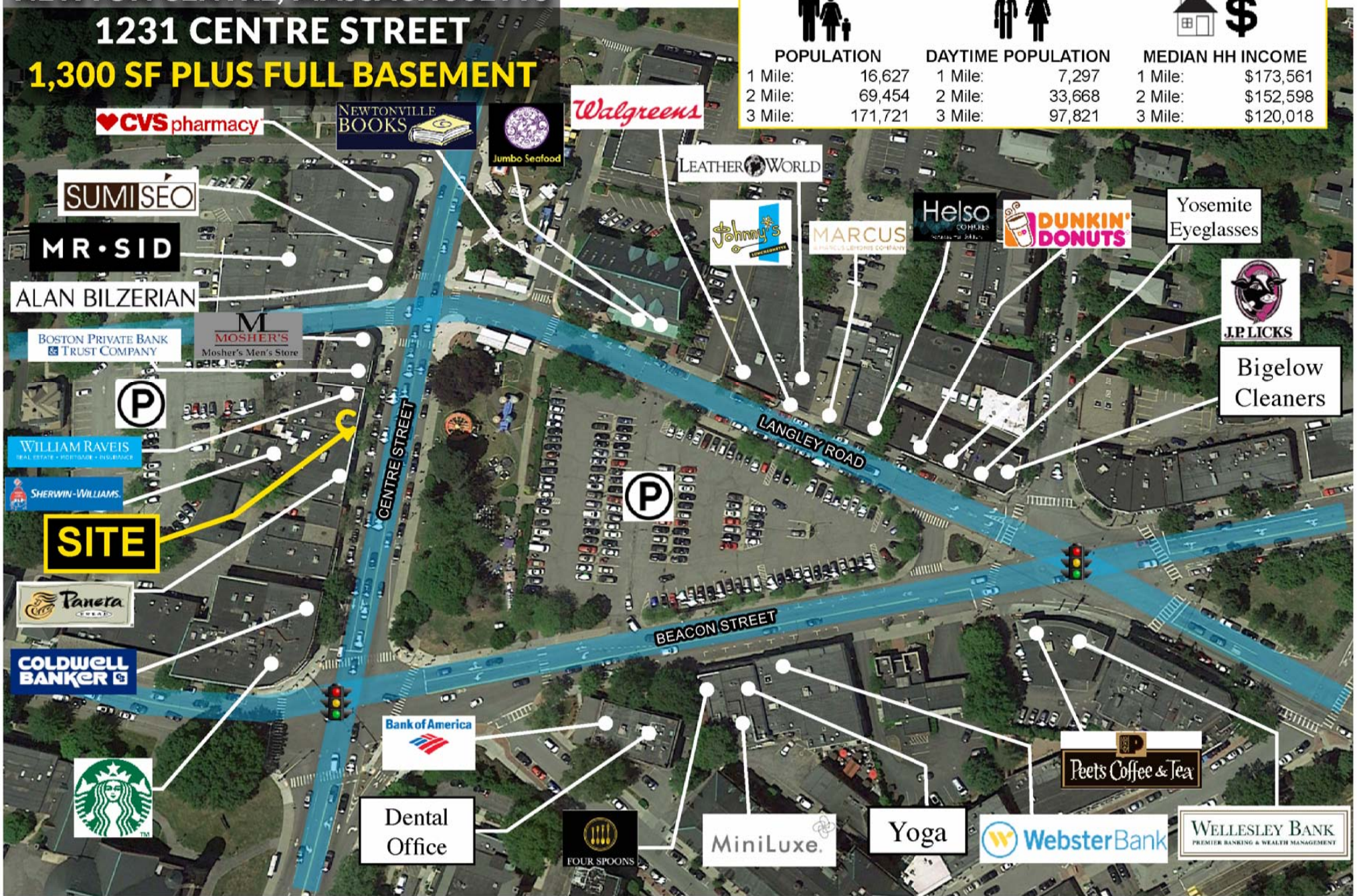
NEWTON CENTRE, MASSACHUSETTS

1231 CENTRE STREET

1,300 SF PLUS FULL BASEMENT

conviser PROPERTY GROUP
CONVISER PROPERTY GROUP, INC
 858 WASHINGTON STREET, SUITE 306 • DEDHAM, MA 02026
 O: (781) 320-0600 • F: (781) 791-4599 • WWW.CONVISERPG.COM

	 POPULATION	 DAYTIME POPULATION	 MEDIAN HH INCOME
1 Mile:	16,627	7,297	\$173,561
2 Mile:	69,454	33,668	\$152,598
3 Mile:	171,721	97,821	\$120,018



CVS pharmacy

NEWTONVILLE BOOKS

Jumbo Seafood

Walgreens

LEATHER WORLD

Johnny's

MARCUS

Helso

DUNKIN' DONUTS

Yosemite Eyeglasses

J.P.LICKS

Bigelow Cleaners

SUMISEO

MR. SID

ALAN BILZERIAN

BOSTON PRIVATE BANK & TRUST COMPANY

MOSHER'S
Moshers Men's Store

P

WILLIAM RAVEIS

SHERWIN-WILLIAMS

SITE

Panera

COLDWELL BANKER

Starbucks

Bank of America

Dental Office

FOUR SPOONS

MiniLuxe.

Yoga

WebsterBank

Peet's Coffee & Tea

WELLESLEY BANK
PREMIER BANKING & WEALTH MANAGEMENT



find your place

FOR MORE INFORMATION CONTACT:

LYNNE COHEN-FRIEDMAN • LYNNE@CONVISERPG.COM • MOBILE: (617) 513-2037

CONNECT WITH US ON SOCIAL MEDIA:



CONVISER PROPERTY GROUP, INC

858 WASHINGTON STREET, SUITE 306 • DEDHAM, MA 02026

O: (781) 320-0600 • F: (781) 791-4599 • WWW.CONVISERPG.COM

CONVISER PROPERTY GROUP IS A MEMBER OF **SITE SOURCE**
RETAIL BROKER NETWORK