

New Mixed Use Residential/Retail/Restaurant
THE LANDING - 25 COMMERCIAL STREET
BRAINTREE, MASSACHUSETTS
1,200 SF - 11,000 SF RETAIL SPACE



ADDRESS:	25 Commercial Street, Braintree, MA
PROJECT NAME:	Landing 53
SPACE AVAILABLE:	1,200 SF - 11,000 SF of Retail Space
FEATURES:	New mixed use 172 residential luxury apartments Vented for restaurant High ceilings
PARKING:	Both off and on street parking (57 off street shared spaces) Area Parking: 148 on street, 110 off street municipal spaces, 267 spaces in MBTA lots
TRAFFIC:	26,000 ADT on Route 53 25,000 ADT on Commercial Street
LOCATION:	Steps from Greenbush Line, Weymouth Landing / E. Braintree Station (375 daily passengers) Next to several well known restaurants 2 miles from Rt. 93 N/S 4 miles to South Shore Plaza, 4 miles to Hingham Shipyard, 5 miles to Derby Street Shoppes

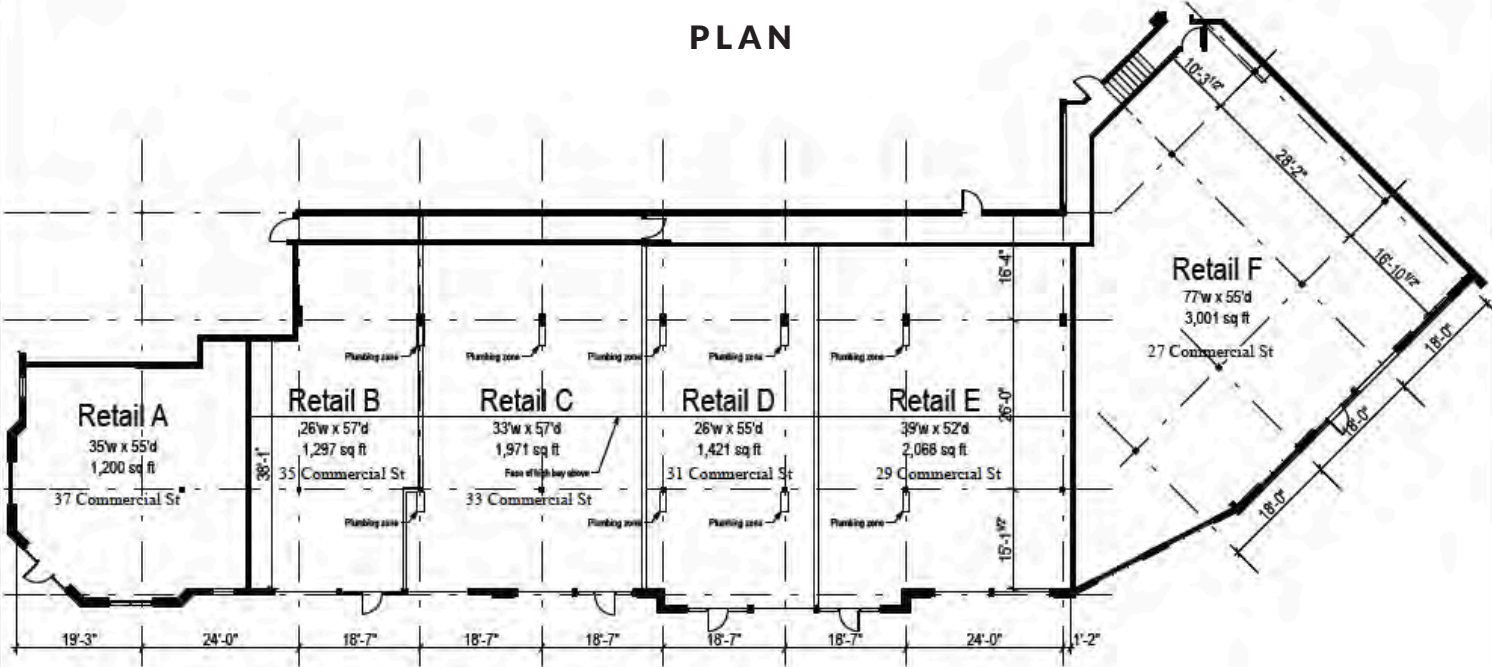
FOR MORE INFORMATION CONTACT:

JIM CONVISER • JIM@CONVISERPG.COM • MOBILE: (617) 839-0456

CONVISER PROPERTY GROUP IS A MEMBER OF



New Mixed Use Residential/Retail/Restaurant
THE LANDING - 25 COMMERCIAL STREET
BRAINTREE, MASSACHUSETTS
1,200 SF - 11,000 SF RETAIL SPACE



INTERIOR VIEW



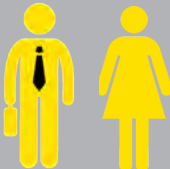
DEMOGRAPHICS

POPULATION



1 Mile: 15,195
 3 Mile: 51,437
 5 Min DT: 92,007

DAYTIME POPULATION



1 Mile: 3,322
 2 Mile: 15,316
 5 Min DT: 55,266

MEDIAN HH INCOME



1 Mile: \$80,556
 2 Mile: \$79,605
 5 Min DT: \$77,302



New Mixed Use Residential/Retail/Restaurant
THE LANDING - 25 COMMERCIAL STREET
BRAINTREE, MASSACHUSETTS
1,200 SF - 11,000 SF RETAIL SPACE